

**DATA SHEET**

# Ativa™ Net

Part of the Infovista Ativa™ suite of applications for Automated Assurance and Operations

Simplify network operations with correlated visibility and control of your network resources and infrastructure

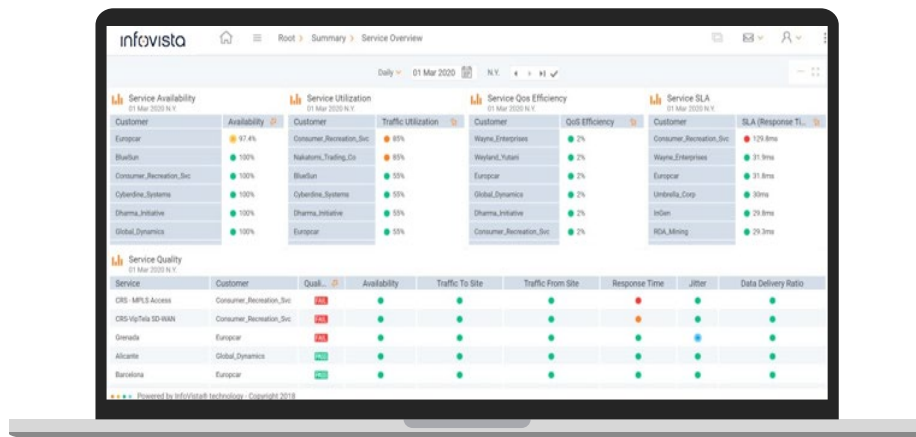


## Ativa™ Net simplifies the management of network infrastructure and resources, by providing state-of-the-art visibility and insights

Infovista has a long tradition of providing solutions for infrastructure and network performance visibility. **The Ativa™ Net** module introduces out-of-the-box and state-of-the-art support for numerous network technologies. The focus of the module is to provide reports and service level dashboards for: IP/MPLS core networks, transport and backhaul, RAN, fixed broadband networks and IT type cloud/data center.

With a proven track record, with major global communications service providers (CSPs), Infovista provides clear value in a range of processes and business functions:

- **Engineering and planning:** Providing the information needed about capacity and resource consumption of transport pipes and nodes. Generating forecasts for network planning
- **Diagnostics and troubleshooting:** Automating proactive alert generation for threshold crossings or anomalies, with identification of service degradation for affected network nodes and visualization of impacted services and customers
- **Performance reporting:** Automated calculation of KPIs and report generation for network operations and internal customer departments
- **Customer reporting:** Monitoring and reporting of customer services, including service level agreement (SLA) reporting, connectivity performance reporting, and application performance reporting. The platform also allows data sharing with customers through streaming or periodical data export



## Flexibility through adaptation and integration with existing components

**Ativa Net** supports a broad range of deployment scenarios and network environments. Its cloud native architecture scales efficiently to manage the growing and large-scale networks. It provides interoperability with a range of network element management (NEM) systems.

Example connectors for specific vendor systems:

- **Ativa Connectors:** this allows full integration and communication with vendor specific systems, i.e., Ericsson EMS, Nokia NetAct, NFM-P, ZTE Netnumen, Huawei U2020. The centralized stack comes with many APIs, giving the flexibility to build new connectors for other vendor systems at any time
- **The Ativa Net** web portal provides flexible, configurable visualization, including geospatial views, automated reports and intuitive dashboards.

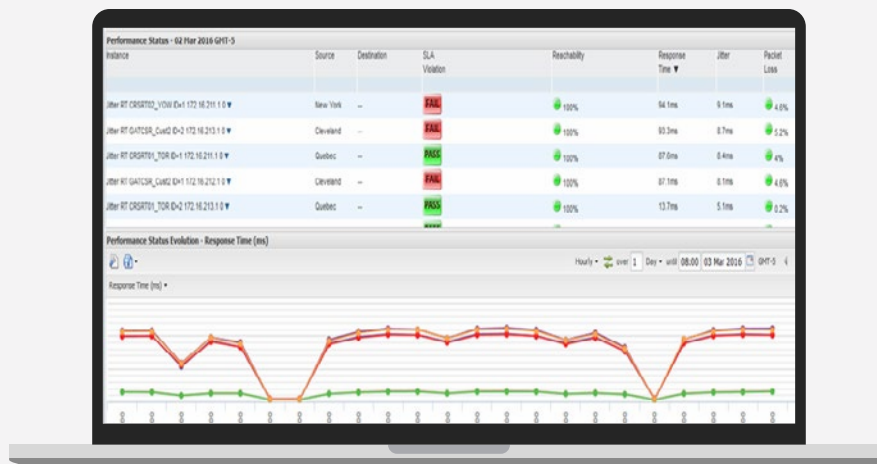
## Rich set of options for visualization and report generation, gives flexibility and ensures data security by providing differentiated access to data

**Ativa Net** provides flexible reporting and dashboard capabilities, including:

- Pre-defined user profiles for manager, customer, engineer, tech. Reports are created based on user profiles and associated viewing rights
- Comprehensive library of pre-built reports as well as fully configurable reports through an intuitive report design interface
- Flexibility with customized models, KPIs and alerts, together with white labelling of the web portal
- SLA reporting per customer, by combining different sources and aggregating them into one report. Data can be grouped by customer, per service, by location or any other properties defined in the model
- Regular automated report generation. This is a recurring option for email distribution for business monetization of the network and service performance

A flexible user profile management capability enables granular management of report access for different user groups.

## Ativa Net supports in-depth reporting for multiple domains and data sources

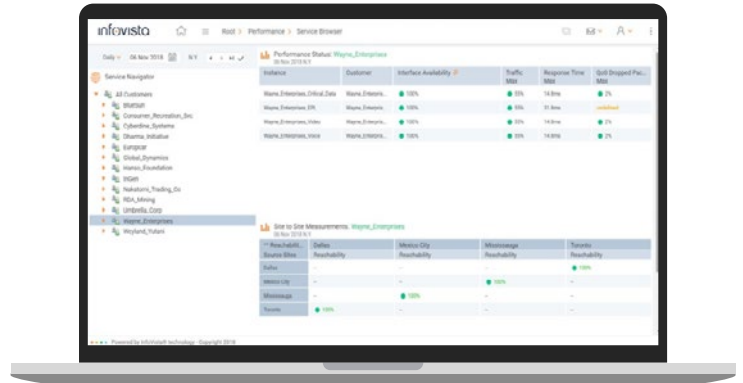


Ativa Net provides support for report customization, KPI design and alert configuration, enabling:

- End-to-end service level monitoring and reporting
- End-to-end topology view across multiple network domains, including RAN, fixed access, transport, core and IT network.

Individual domains are also supported, including fixed access, transmission, microwave or IT networks. Standard data access methods are used (i.e., SNMP, EMS integration or using REST APIs). Users can easily build views by selecting any objects out of the common Ativa Net inventory.

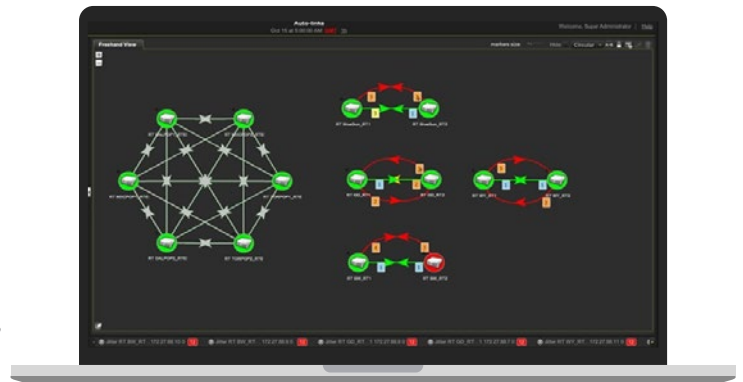
- Capacity planners can focus on specific interfaces, trunks, peering traffic etc.
- Service Managers can build VPN or any other service’s topology for specific areas or services
- Transport engineers can use this application for building specific domain reports



## Visualization of topology and KPIs with dashboards for end-to-end insights into the network and topology.

Advanced features for link discovery enable users to determine all physical and logical connections. They can then be automatically displayed in the dashboard and reflect the service or network topology used.

The Infovista central repository stores the discovered topology and users can enrich this with service-related information such as customer name, service ID, location, SLA information or any other useful info.



Reports can be exported in different formats including PDF, CSV, XLSX or XML.

Multiple dashboard options are supported:

- Automated topology: Shows selected instances with all physical and logical connections
- Near real-time auto-refreshing and support for several types of views (maps, list, free topology)
- Visualization of multiple KPIs supporting KPI correlation for single or multiple devices
- Temporal analysis for comparing KPIs over a given time period



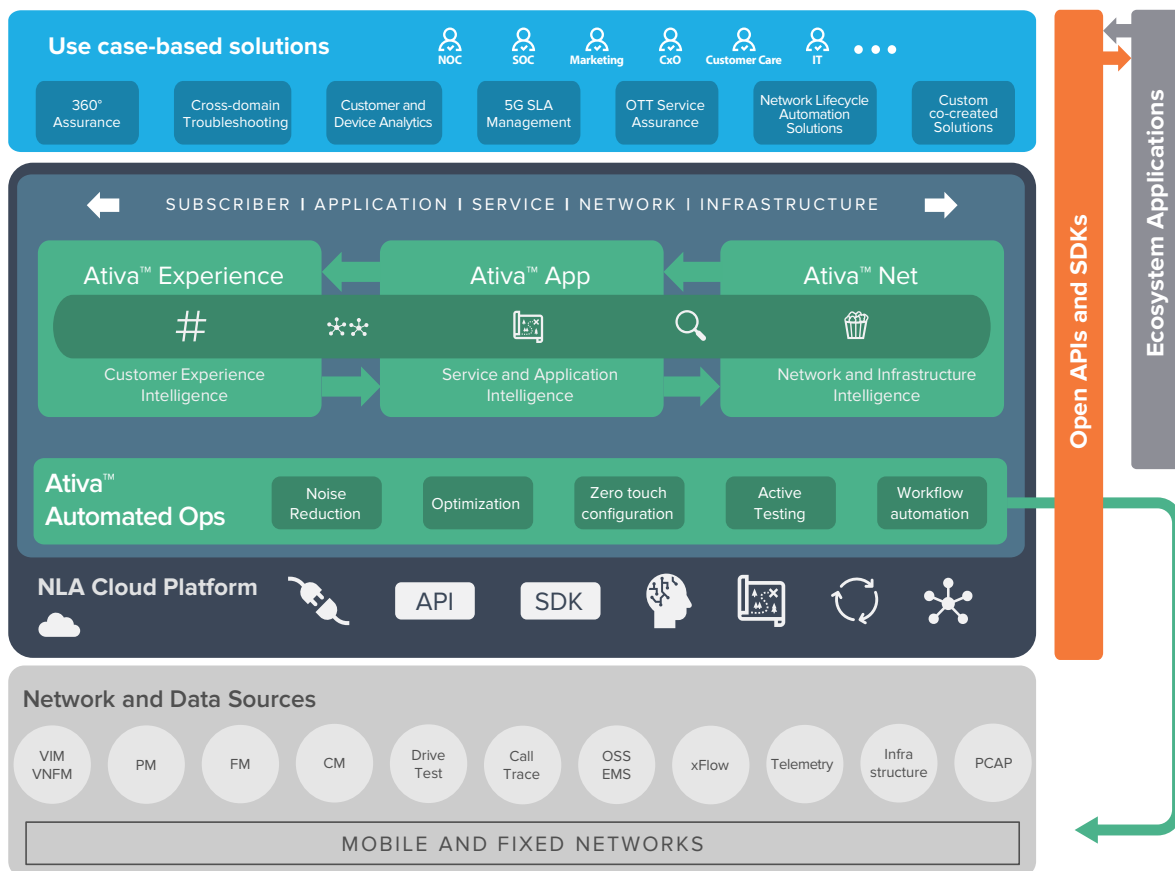
## Part of Infovista Ativa™ for Automated Assurance and Operations

Empower accelerated customer-driven digital transformation with an extensible cloud-native platform

**Ativa Net** is part of the Infovista **Ativa** suite of applications for automated assurance and operations. It enables advanced network and service operations based on ubiquitous and correlated experience, service, and network intelligence. The **Ativa** applications are:

- **Ativa Net** – for cross-domain visibility network resources and infrastructure performance. It correlates network services, VNFs and infrastructure for rapid troubleshooting
- **Ativa App** – for cross-domain visibility of subscriber-facing and resource-facing services. It proactively monitors and troubleshoots quality of service (QoS) and enterprise SLAs across wireless and wireline
- **Ativa Experience** – for cross-domain visibility of perceived subscriber experience, including deep packet analysis
- **Ativa Automated Ops** – for automated AI/ML-driven predictive analytics; network and service orchestrator interoperability; zero-touch resource configuration; NOC/SOC workflow automation; and active testing and validation

### Ativa™ | Automated Assurance and Operations



Ativa provides a cost-efficient path towards increasingly advanced network and service operations processes and scenarios, with each combination enabling new use cases, all empowered by Infovista’s network lifecycle automation (NLA) cloud platform.

## About Infovista

Infovista is the global leader in network lifecycle automation (NLA) for the next-gen networks era. With its unique NLA approach, Infovista allows communications service providers (CSPs) and enterprises to improve their network performance and customer experience, optimize their productivity, and reduce their costs, while maximizing return on their investments. Spanning the entire network lifecycle, Infovista's products and solutions leverage an open, integrated, cloud-native portfolio that automates tasks, flows, analytics, and decisions to the greatest extent possible. More than 1,500 customers, including 400 mobile network operators, around the world rely on Infovista to plan, design, deploy, test, operate, support, optimize, evolve, report on and monetize their networks.